

ENROUTE™

An eNewsletter of LeMay - AMERICA'S CAR MUSEUM®

ACM eNewsletter

November 16, 2011

Follow us!



[Club Auto Kirkland](#)

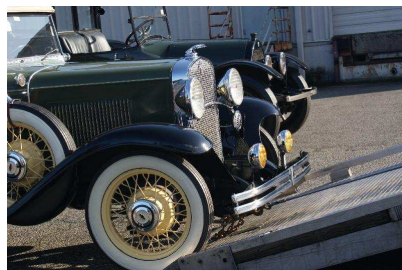
Thursdays:
3 p.m. - 6 p.m.

Saturdays:
11 p.m. - 1 p.m.

'We've Moved In!'

By Renee Crist, Director of Collection Management

How do you fill a new a museum building? One car at a time!



After two years of preparing the car collection for its new home, it was finally time to move from our temporary home in Fife to our new 165,000-square-foot building in Tacoma.

We began moving the week of Oct. 16 and continued for nearly two weeks. This included cars, office equipment - everything. The first cars brought to the new building were primarily the pre-war vehicles we had ready and waiting at the warehouse. I selected these cars because many are open-top cars with delicate interiors and exteriors, and it was looking like we were going to have excellent weather for moving



**Get Involved &
Stay Informed:**

[Construction Progress](#)

[Check out Our Blog!](#)

[Become a Member!](#)

[Volunteer](#)

[Check out Upcoming
Events](#)

[Visit Club Auto
Kirkland](#)

[Visit Club Auto
Colorado](#)

[Book an Event](#)

[Make a Donation](#)

Official Providers:



TACOMA / Ford / Toyota / Scion
OLYMPIA / Chevrolet / Cadillac / Hyundai



them safely. As it turned out, our unpredictable Pacific Northwest weather smiled upon us with two beautiful sunny days. With the help of our friends at Tacoma Towing, we moved more than 100 vehicles into the museum in two days.



Each day, volunteer teams broke up into two crews. One crew was at the Five warehouse, pushing and staging the cars for pickup, and the other crew received the cars at the new facility. The great weather afforded us the luxury of staging the cars outside in the parking lot to allow faster pickup for the ramp trucks. Thanks to a great team effort, we got everything in safe and sound.

[Click here to read more](#)

John and Marilyn Dimmer Donate 1965 Lotus F2 35 Race Car to ACM

Thanks to a super-generous donation by Tacoma native John Dimmer and his wife Marilyn, ACM has added a 1965 Lotus 35 Climax powered Tasman Series formula race car to its extensive vehicle collection.

ACM took delivery of the race car in time to show it off during the "Hard Hat & High Heels" gala. The British racing green car was prominently displayed near the entrance of the building where guests could check it out.



"The Lotus 35 is symbolic of the various types of cars visitors will see when they come to the Museum," said Dominic Dobson, ACM's chief development officer. "With our grand opening coming next year, we've seen an increase in vehicle donations ranging from the Lotus race car to the Museum's 1930 Duesenberg."



MICHAEL CRAFT
PHOTOGRAPHY



The Lotus 35, of which just 22 were built, was designed to be a multi-purpose car capable of competing in Formula 2, Formula 3 or the Tasman Cup Series. This particular Lotus 35 was a European Formula 2 race car in the 1965 and 1966 seasons (chassis number 35 F18) and was run with a 1-liter Cosworth engine. In 1967, the car was upgraded to 2.5-liter Tasman specifications for racing in Australia and New Zealand with a Coventry Climax FPF engine. The power plant was later replaced with a Ford 289 V8 engine.

Brought back to the States in 1968, the 35 F 18 was outfitted with a 4.7 Ford Cobra V-8 engine for a Formula A event at Willow Springs (Calif.) and won its class with Vernon Shields at the wheel.

John C. Dimmer, an ACM board member, restored the car to its Tasman specifications in 1990. His son and daughter, John and Carolyn, then placed the 35 in numerous vintage racing events, including the Tasman Revival in Australia and the Goodwood Circuit Revival Meeting in England.

"We enjoyed having the car compete for many years, but now it's time to let others enjoy it," said Dimmer. "Lotus was on top of the racing world in the 1960s and this car is a beautiful representation of a classic racing era. I'm delighted it will be on display in Tacoma at ACM."



Seattle Auto Show Goers got a Sneak Peek of ACM Cars

ACM was a hit at the recent Seattle Auto Show at the newly renamed CenturyLink Field Event Center. The Museum - which was invited to have a display at the auto show for the fifth consecutive year - showcased its 1926 Marmon (fresh off the Pebble Beach Motoring Classic) and the recently acquired A-1 Grand Prix Team USA Lola Formula Car.



"The foot traffic was great at our display," said Scot Keller, ACM's chief marketing & communications officer. "We were situated on the upper mezzanine and the new 900-square-foot exhibit space was fantastic. ACM was built to highlight America's 100-plus year love affair with the automobile, and that's what people took away after stopping by to see us. The two cars were a great representation of what's in store for enthusiasts when the Museum opens next year."

"We're always looking for great automobiles to display at the Seattle Auto Show, and ACM didn't disappoint again," said Jim Hammond, show manager and executive director of the Puget Sound Automobile Dealers Association. "We've always had a great working relationship with ACM, and we are very enthusiastic about having a top-tier auto museum opening in the Pacific Northwest."

The Seattle Auto Show featured more than 400 vehicles ranging from exotic supercars and muscle cars to the latest fuel-efficient vehicles, hybrids and electrics.

